

O Little Town of Bethlehem

Lead Sheet

from thehymnalproject.org

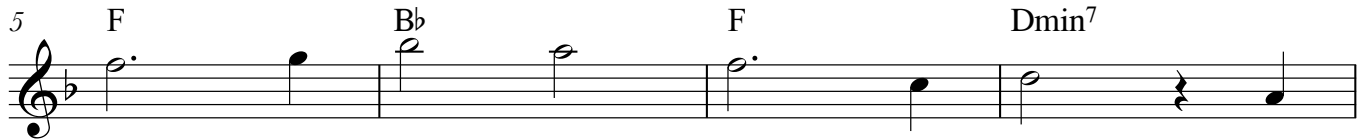
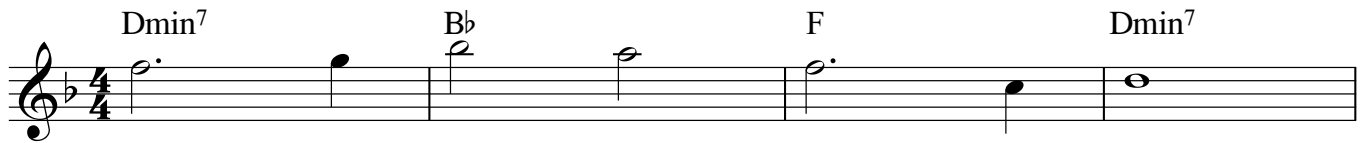
Text: Phillips Brooks, 1835-1893

Tune: Lewis H. Redner, 1831-1908

Arrangement: Blake Flattley

Setting: Benje Daneman

Intro ♩=80



Setting 1

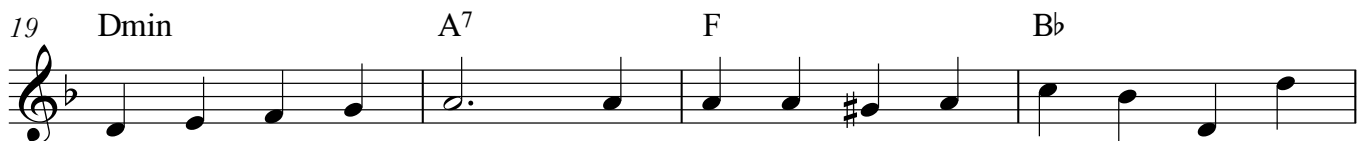
1. O
- (2. For)
- (3. How)
- (4. O)



li - tle town of Beth - le - hem, How still we see thee lie! A - bove thy deep and
Christ is born of Mar - y, And, gath ered all a - bove While mor - tals sleep, the
si - lent - ly, how si - lent - ly The won drous gift is giv'n! So God im - parts to
ho - ly Child of Beth - le - hem, De - scend to us, we pray; Cast out our sin, and



dreamless sleep The si - lent stars go by; Yet in thy dark streets shin - eth The
an - gels keep Their watch of won - d'ring love. O morn - ing stars, to - geth - er Pro -
hu - man hearts The bless ings of His heav'n. No ear may hear His com - ing; But
en - ter in, Be born in us to - day. We hear the Christ - mas an - gels The

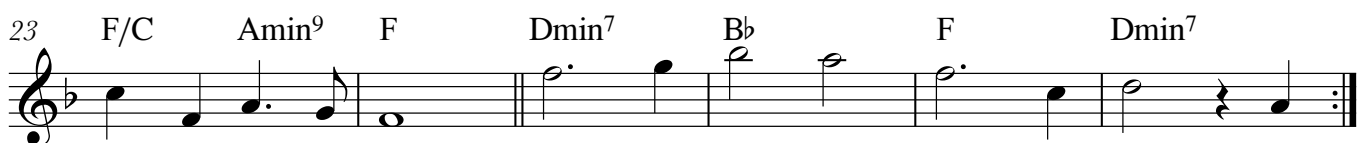


ev - er - last - ing light. The hopes and fears of all the years Are
claim the ho - ly birth, And prais - es sing to God the king And
in this world of sin, Where meek souls will re - ceive Him, still The
great glad tid - ings tell; O come to us, a - bid e with us, Our

To ENDING
last time



Interlude



met in thee to - night.
peace to all the earth!
dear Christ en - ters in.
Lord Im - man - u - el!

2. For
3. How
4. O

O Little Town of Bethlehem

Setting 2

29 Amin Dmin⁷ F Amin

33 Dmin C Gmin⁷ F Amin Dmin

37 F C B^b B^bmaj⁷

41 Amin F Dmin F/C Amin⁷ F

To ENDING last time

Interlude

45 Dmin⁷ B^b F Dmin⁷

Ending

49 Dmin⁷ B^b F Dmin⁷

53 F B^b F Dmin⁷

Note to Director: Settings 1 and 2 are optional and can be substituted at anytime within the song.
The song can be played in both settings. The intro and ending works with either.