

The Church's One Foundation

♩=125

Funky Guajira Son

from thehymnalproject.org

Text: Samuel J. Stone, 1839-1900

Tune: Samuel S. Wesley, 1810-1876

Arrangement: Benje Daneman

Setting: Benje Daneman

Intro

A^{ma}7(add4)

F^{#m}7(b13)

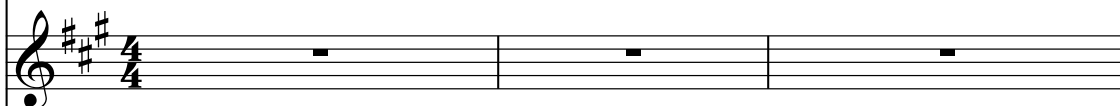
Lead Sheet



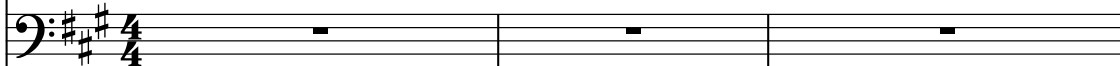
Trumpet in B \flat



Tenor Saxophone



Trombone



Piano



The Church's One Foundation

4 Dma7(#11)

Lead Sheet

Tpt.

Ten. Sax.

Tbn.

Pno.

mf *mf*

Dma7(#11)

6 E7(sus) E7(add2)

Lead Sheet

Tpt.

Ten. Sax.

Tbn.

Pno.

1. The

E7(sus) E7(add2)

Verse 1/Setting 1

9 **A_{ma}7(add4)**

Lead Sheet

Chur ch's one foun - da - tion Is Je -sus Christ, her

Tpt.

Ten. Sax.

Tbn.

Pno. **A_{ma}7(add4)**

12 **D_{ma}9(#11)**

Lead Sheet

Lord; She is his new cre - a - tion By

Tpt.

Ten. Sax.

Tbn.

Pno. **D_{ma}9(#11)**

mf

mf

mf

The Church's One Foundation

15 Bm^9 Cma^9 $Dma7(\#11)$

Lead Sheet

wa - ter and the Word. From heav'n he came and sough her To

Tpt.

Ten. Sax.

Tbn.

Pno. Bm^9 Cma^9 $Dma7(\#11)$

19 Bm^9 Cma^9 Bm^7 $Ama7(add4)$

Lead Sheet

be his ho - ly bride. With his own blood he bought her, And

Tpt.

Ten. Sax. *mf*

Tbn. *mf*

Pno. *mf* Bm^9 Cma^9 Bm^7 $Ama7(add4)$

Interlude 1

23 D⁷ E⁷ A^{ma7}(add4) F^{#m7}(b13)

Lead Sheet

for her life he died.

Tpt.

Ten. Sax.

Tbn.

Pno.

26 D^{ma7}(#11) E⁷

Lead Sheet

2. E -

Tpt.

Ten. Sax.

Tbn.

Pno.

The Church's One Foundation

Verse 2/Setting 2

28 $F\#m7(b13)$

Lead Sheet

lect from ev - 'ry na - tion, Yet one o'er all the

Tpt.

Ten. Sax.

Tbn.

Pno. $F\#m7(b13)$

31 $Bm7(add4)$ $Ama7/C\#$ $Dma7$ $Gma7(\#11)$

Lead Sheet

earth; Her char-ter of sal - va - tion One Lord and faith one birth. One

Tpt.

Ten. Sax.

Tbn.

Pno. $Bm7(add4)$ $Ama7/C\#$ $Dma7$ $Gma7(\#11)$

The Church's One Foundation

36 F#m E Dma7 A/C# Bm7 A13 G

Lead Sheet

ho - ly name she bless - es, Par - takes on ho - ly food, And

Tpt.

Ten. Sax.

Tbn.

Pno.

40 F#m7(b13) D7 E7

Lead Sheet

to one hope she press - es With ev 'ry grace en -

Tpt.

Ten. Sax.

Tbn.

Pno.

The Church's One Foundation

Interlude 2

43 A ma7(add4) F#m7(b13)

Lead Sheet

Tpt.

Ten. Sax.

Tbn.

Pno.

45 Dma7(#11) E7

Lead Sheet

Tpt.

Ten. Sax.

Tbn.

Pno.

3. Through

Verse 3/Setting 1 (No Horns)

47 Ama7(add4)

Lead Sheet

toil and trib - u - la - tion, And tum - ult of her

Tpt.

Ten. Sax.

Tbn.

Pno. Ama7(add4)

50 Dma9(#11)

Lead Sheet

war She waits the con - sum - ma - tion Of

Tpt.

Ten. Sax.

Tbn.

Pno. Dma9(#11)

The Church's One Foundation

53 Bm^9 $Cma9$ $Dma7(\#11)$

Lead Sheet

peace for - ev - er - more. Till with the vi - sion glo - rious Her

Tpt.

Ten. Sax.

Tbn.

Pno. Bm^9 $Cma9$ $Dma7(\#11)$

57 Bm^9 $Cma9$ Bm^7 $Ama7(add4)$

Lead Sheet

long - ing eyes are blest, — And the great Church vic - to - rious Shall

Tpt.

Ten. Sax.

Tbn.

Pno. Bm^9 $Cma9$ Bm^7 $Ama7(add4)$

Interlude 3

61 D⁷ E⁷ A ma⁷(add4) F#m⁷(b13)

Lead Sheet

be the church at rest.

Tpt.

Ten. Sax.

Tbn.

Pno.

64 Dma⁷(#11) E⁷

Lead Sheet

4. Yet

mf *f*

Tpt.

Ten. Sax.

Tbn.

mf *f*

Pno.

mf *f*

Dma⁷(#11) E⁷

Verse 4/Setting 1

66 *A*ma7(add4)

Lead Sheet

she on earth has un - ion With God, the Three in

Tpt.

Ten. Sax.

Tbn.

Pno. *A*ma7(add4)

69 *D*ma9(#11)

Lead Sheet

One, And mys - tic sweet com - mun - ion With

Tpt. *mf*

Ten. Sax. *mf*

Tbn. *mf*

Pno. *mf* *D*ma9(#11)

The Church's One Foundation

72 **Bm⁹** **Cma⁹** **Dma⁷(#11)**

Lead Sheet
those whose rest is won. O bless-ed heav'n-ly cho - rus! Lord,

Tpt.

Ten. Sax.

Tbn.

Pno. **Bm⁹** **Cma⁹** **Dma⁷(#11)**

76 **Bm⁹** **Cma⁹** **Bm⁷** **Ama⁷(add4)**

Lead Sheet
save us by your grace. — That we, like saints be - fore us, May

Tpt.

Ten. Sax. *mf*

Tbn. *mf*

Pno. **Bm⁹** **Cma⁹** **Bm⁷** **Ama⁷(add4)**

The Church's One Foundation

Ending

80 D⁷ E⁷ A^{ma7}(add4)

Lead Sheet

see you face to face.

Tpt.

Ten. Sax.

Tbn.

Pno. D⁷ E⁷ A^{ma7}(add4)

83 F#m⁷(b13) D^{ma7}(#11)

Lead Sheet

Tpt.

Ten. Sax.

Tbn.

Pno. F#m⁷(b13) D^{ma7}(#11)

Note to Director: Settings 1 and 2 are optional and can be substituted at anytime within the song.
 The song can be played in both settings. The intro and ending works with either.

The Church's One Foundation

86

Lead Sheet

E7(sus) E7(add2) A^{ma}7

rit.

Tpt.

Ten. Sax.

Tbn.

Pno.

E7(sus) E7(add2) A^{ma}7

rit.